

## 电流互感器 户外(户内) 油浸式

## Current Transformer outdoor(indoor) oil-immersed



## L JW(D)1-10,35 型电流互感器

## L JW(D)1-10,35 Voltage Transformer

## 概述 Description

本型电流互感器是钢箱油浸式，户外户内两用装置，供频率50Hz的系统中，作电流、电能油量及继电保护之用。

本型互感器允许在额定电流120%的情况下长期运行。适用于海拔高度不超过4000米，周围气温变化不超过 $-25^{\circ}\text{C}\sim+40^{\circ}\text{C}$ 的地区。

The type current transformer is a kind of steel tank oil-immersed type of current transformer providing current and electric energy measurement and relaying protection to system with the frequency of 50Hz.

The current transformer carries out the long operation under the conditions for 20% of rated current, it is used in the fields of altitude not exceed 4000m, and max. Change of ambient temperature not exceed  $-25^{\circ}\text{C}\sim+40^{\circ}\text{C}$ .

## 型号含义 Type designation

<b>L</b>	<b>J</b>	<b>W</b>	<b>D</b>	<b>1</b>	<b>-</b>	<b>10,35</b>	
							电压等级, kV(Voltage grade,kV)
							设计序号(Design code)(单瓷瓶)
							继电监控(有D是双次级 无D是单次级)
							Continuous protection control
							(With D means double secondary With out D means single secondary)
							户外型(亦可用于户内)(Outdoor type indoors also available)
							钢箱油浸式(Steel tank oil-immersed type)
							电流互感器(Current transformer)

## 结构简介 Construction

本型互感器为单相油浸自冷气式适用于户外(户内)，互感器内装绝缘和冷却用的变压器油，并采用真空滤油和真空注油工艺。

10kV级油面跟箱盖约为15mm，箱盖上面装有注油阀，(阀上有气孔)并有防雨、雪护盖。35kV级套管上装有储油壶，储油壶内有隔膜，使变压器不与空气接触，减缓了油的氧化速度。互感器热稳定75倍，动稳定187.5倍。本产品分单变比单次级，单变比双次级，双变比单次级，双变比双次级四种型式。其中计量用CT为0.2级，继电监控用CT分别有0.2、0.5、1、3(D)级等。

The transformer is made of single-phase oil-immersed type self-cooling type, which can be used indoors or outdoors. There are insulation and oil for cool down the transformer installed inside the transformer. It adopts vacuum oil-filter and vacuum oiling arts.

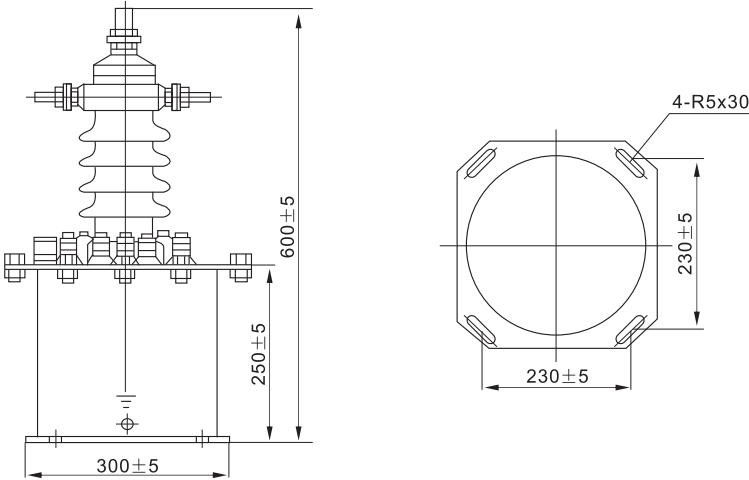
The distance between class 10kV fuel and cover is about 15mm, there is an oiling valve installed above the cover, (there is an air hole on the valve) with water-proof and snow-proof cover. There is an oil tank inside the class 35kV tube, the diaphragm inside the oil tank can make the oil be separated from the air, which decreases the oil oxidizing speed. Transformer thermal stability 75 times and dynamic stability 187.5 times. The product has four models: single-ratio single secondary, single ratio double secondary, double ratio single secondary and double ratio double secondary. Ct for measurement, it is class 0.2, CT for continuous protection control, it is class 0.2, 0.5 and 1, 3(D), etc.

技术参数 Technical data

型号 Type	电压等级 Voltage class (kV)	额定电流比 Rated current ratio(A)	计量0.2级、容量COSφ=0.8 Measurement class 0.2、 capacity(vA)	继保1级容量 Capacity for class 1 continuous protection	重量 Weigh (kg)
LJW1-10	10	5~400/5	10~15	无继保无监控 Withot continuous protection Without monitoing	21
LJW1-35	35	5~600/5	30~(50)	无继保无监控 Withot continuous protection Without monitoing	64
LJWD1-10	10	5~400/5	10~15	15~(30)	28
LJWD1-35	35	5~600/5	30~(50)	30~(50)	83

外形尺寸 Overall Dimension

LJW(D)1-10 Overall Dimension



LJW(D)1-35 Overall Dimension

